

TCI GLENBRED NEWSLETTER

to Preserve Protect & Enhance



Introducing "Wally"

Wally has 9 years of veterinary nursing experience, a Bachelor of Science and is currently pursuing a Master of Science through Massey University with a specific focus on mammalian reproductive physiology.

Wally is particularly interested in assisted reproductive techniques, male and female fertility, gametogenesis, activation of oocytes, female cyclicity and sperm morphology/capacitation.

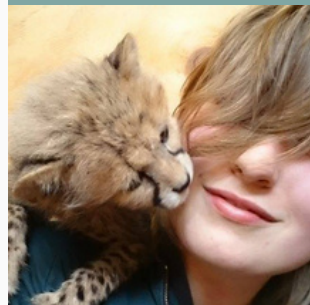
She has volunteered hand raising cheetah cubs in South Africa, monitoring biodiversity in Sumatra, helping feed and monitor Haast Tokoeka Kiwi chicks at Orokonui Ecosanctuary in Dunedin amongst many other voluntary roles.

When she can get away, she loves exploring New Zealand, camping and hiking in picturesque locations. Wally is also very artistic and enjoys drawing and painting animals and experimenting with different media. She is thrilled to join TCI Glen Bred where her passion for animals and reproduction meets the practice of TCI, reproduction and veterinary medicine.

Wally joins our growing TCI GlenBred team of Dr Becky, Dr Prabz and Jody. Welcome Wally, we are absolutely chuffed to have you onboard!

*The latest on
this seasons issue:*

**INTRODUCING WALLY -1
RESPIRATORY FUNCTION
GRADING SCHEME -2
TCI & SURGICAL
ARTIFICIAL
INSEMINATION - 3
SPERM ASSESSMENT &
MORPHOLOGY - 4
BREEDERS TOOLKIT
RESOURCE - 5**





*THE KC/ CAMBRIDGE UNIVERSITY -
RESPIRATORY FUNCTION GRADING SCHEME*

In June 2023 Dr Becky participated in the inaugural RFG Regional Assessor training program and so is now an official Regional Assessor. The RFG scheme is essentially a 3-minute exercise tolerance test for Bulldogs, French Bulldogs and Pugs and provides a grade from 0 (not affected) to 3 (severely affected) for brachycephalic obstructive airway disease (BOAS). It can be done in other breeds but is not yet validated for them.

[Read More Here](#)



The Kennel Club and
University of Cambridge
Respiratory Function
Grading Scheme



Surgical vs Trans-Cervical Insemination

BY DR BECKY MURPHY

The availability of frozen semen to improve and diversify genetics in dogs is especially important for geographically isolated countries such as New Zealand where the costs and availability of importing a live stud dog can be prohibitive. Chilled semen can be very useful for domestic situations where the dog and bitch are located some distance from each other. Fresh semen AI is often done in situations whereby the bitch is dominant to the dog and won't allow mating, or there are other physical or behavioural issues preventing mating. There are essentially three types of artificial insemination available in New Zealand.

These are vaginal AI, trans cervical AI (TCI) and surgical AI (SAI). Vaginal AI deposits the semen 'south of the cervix' so that the semen still needs to migrate through the cervical os and into the uterine body and horns. TCI and SAI deposit semen 'north of the cervix' into the uterine body/horns and so that migration isn't required. For the shorter lived frozen and chilled semen, intra-uterine insemination is essential because sufficient numbers are unlikely to survive the transit time and conditions through the cervix and can be done much later in the bitches season, when the eggs are more likely to be fertile.

[Full Article Here](#)



"Endoscopic artificial insemination has numerous benefits over surgical insemination. There is a growing body of evidence to support it being a superior technique to SAI in both benefits to the bitch, and reproductive outcomes."

Sperm Morphology

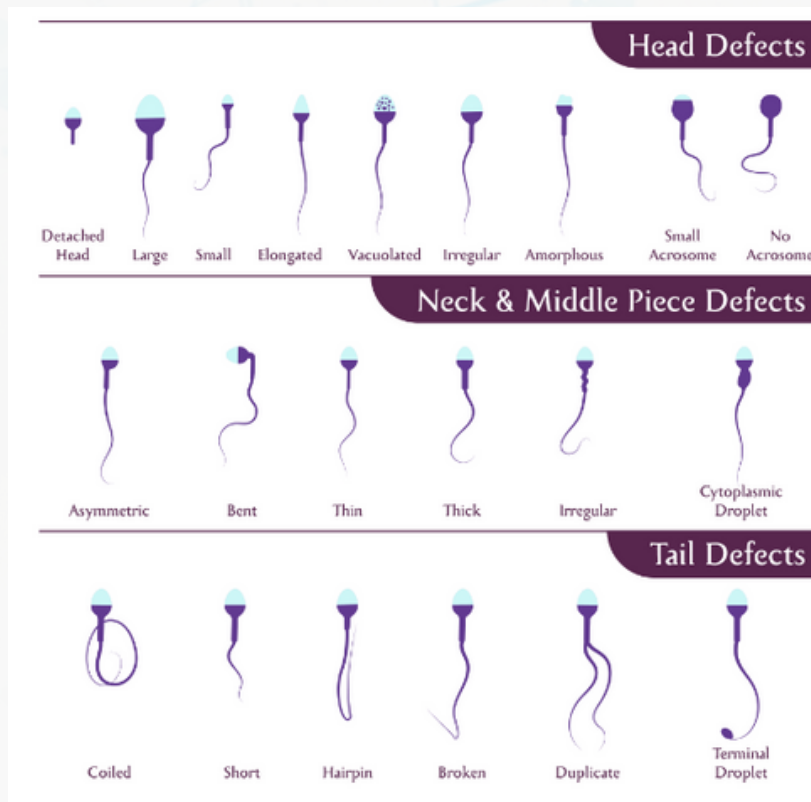
BY YVONNE WALLER "WALLY" REPRODUCTION TECHNICIAN

There are many factors that influence fertility and reproductive potential such as age, weight, nutrition, season, stress, and genetics. Assisted reproductive techniques such as transcervical insemination (TCI) provide us with an opportunity to enhance some of these factors, and here we thought we would take the opportunity to discuss sperm!

Sperm production (or spermatogenesis) is a process occurring in the testes where a special type of cells called spermatocytes divide and differentiate into the mature sperm (spermatozoa) that are then capable of finding and fertilising the ovum (the female's egg).

In the dog, the process of spermatocytes undergoing biochemical, morphological, and functional changes to become spermatozoa takes approximately 60 days and is a continuous process: with dogs producing millions of sperm cells each day.

Just like fertility itself, spermatogenesis can be influenced by the dog's age, stress levels, nutritional status, hormones, season, and genetics, although this list is not exhaustive. Ultimately, this process leads to the production of the sperm rich part of semen, and that's where we come in!



[FULL ARTICLE HERE](#)



Abnormal sperm: <https://www.lifecell.in/blog/health-check/how-does-sperm-morphology-affect-male-fertility>



TCI
GlenBred
 protect | preserve | enhance

TCI GlenBred




TCI GLENBRED & TOTALLY VETS BREEDERS TOOLKIT RESOURCE

TCI GlenBred has worked with Totally Vets to review and update its Breeders Toolkit Resource available to clients. Check out the link below for information from heats, to de-sexing, to breeding, whelping, neonatal care and more!

Raising a litter of pups can be an extremely involved and rewarding process and one that should never be embarked upon without full consideration of all possible steps and potential outcomes.

[See Resource Here](#)

 @ Totally Vets 25 Manchester St Feilding

 repro@tcivets.co.nz

Sign up for exclusive content and subscribe to our newsletter

repro@tcivets.co.nz

[Subscribe](#)

www.tcivets.com

TCI GLENBRED

*Semen Freeze Clinic
Respiratory Function Grading*

SOUTH ISLAND TOUR AUGUST 2023



Nelson - 17th August

Semen Freezing
Respiratory Function Grading
DNA testing
Patella & Cardiac (auscultation) Dogs
NZ Certificates

Postponed



Christchurch 18th August

Semen Freezing
Respiratory Function Grading
DNA testing
Patella & Cardiac (auscultation) Dogs
NZ Certificates
& McMaster & Heap Clinic



Dunedin 19th August

Semen Freezing
Respiratory Function Grading
DNA testing
Patella & Cardiac (auscultation) Dogs
NZ Certificates
@ Forrester Park



**TCI
GlenBred**
protect | preserve | enhance

25 Manchester Street
Feilding

SECURE YOUR APPOINTMENT NOW
repro@tcivets.co.nz